

# CS6

## Cardioid Polar Pattern Full Range Loudspeaker System



### CS6 Cardioid

## acoustic technologies

The Acoustic Technologies CS6 Cardioid is a special applications cabinet providing a true full range cardioid polar response pattern. When used in conjunction with an appropriate signal processing and amplification system a rear signal attenuation of greater than 20dB is readily achieved.

The CS6 employs two transducers. The front facing speaker is a full range, dual concentric device with a 4" woofer, a soft dome tweeter and an optimized passive crossover network providing high intelligibility audio reproduction. The rear facing speaker is a woofer only with identical characteristics to the front facing unit, ensuring maximum rear signal attenuation.

The CS6 enclosure is constructed of a moulded composite high impact material with UV stabilization and is available in many colours. Two powder-coated grills protect the coaxial speakers."

The Acoustic Technologies CS6 Cardioid is eminently suited to a wide range of demanding audio applications requiring a highly directional loudspeaker system at full range frequencies. Typical installations would include Factory and Shopping Mall paging systems, Airport, Bus Station and Commuter Rail announcement systems, Law Courts, Exhibition Spaces, Marketing Presentations and almost any vocal audio system in noise sensitive environments.

**CS6 Cardioid EXCELLENCE IN AUDIO**

### CS6 Cardioid

#### FEATURES

- **Cardioid Polar Pattern**
- **High Front / Rear Rejection Ratio**
- **Superior Intelligibility In Difficult Acoustic Environments**
- **High Quality Audio Reproduction**

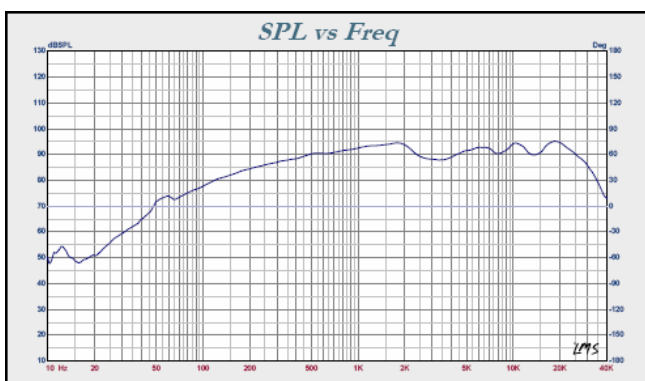
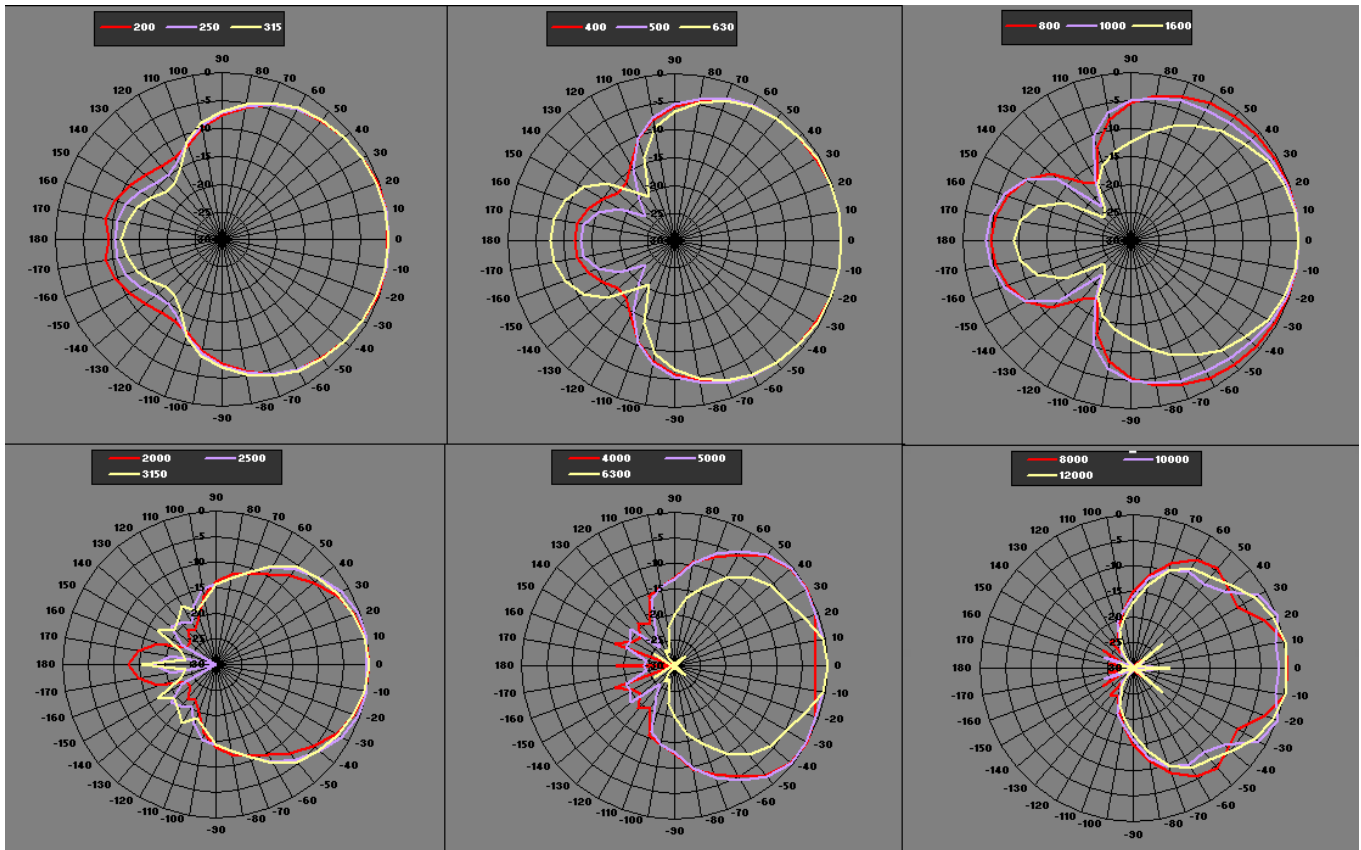
## SPECIFICATIONS

<b>Transducer Complement</b>	<b>Front Facing</b> <b>Rear Facing</b>	1 x 4" Dual Concentric Transducer 1 x 4" L.F. Transducer
<b>Frequency Response</b>		80 Hz - 22 kHz $\pm$ 3 dB ( DSP Processed)
<b>Sensitivity</b>		89 dB @ 1 watt, 1 metre
<b>Maximum Input</b>	<b>Continuous Program</b>	25 Watts RMS 50 Watts Program
<b>Maximum SPL</b> (Calculated)	<b>Continuous Program</b>	103 dB @ 1 metre 106 dB @ 1 metre
<b>Rear Attenuation</b>		> 20dB
<b>Nominal Impedance</b>		8 Ohms (Front & Rear)
<b>Physical Size</b>		150mm(D) x 156mm (L) (Excluding Bracket)
<b>Weight</b>		2.4Kg (Varies slightly with Finish & Bracket)
<b>Environmental Rating</b>		IP65 (Dependant on Grille Treatment)
<b>Connectors</b>		Sealed Flying Lead
<b>Hardware</b>		Mounting Bracket

The CS6 enclosure is constructed using an architectural grade aluminium extrusion.  
The transducers are protected by a rugged perforated aluminium grille, acoustic foam & stainless steel moisture barrier.  
Acoustic Technologies reserve the right to alter the CS6, without prior warning in the interests of product improvement.

# CS6 Cardioid

- **Factory Paging Systems**
- **Public Transport Areas**
- **Shopping Centres & Public Malls**
- **Law Courts**
- **Noise Sensitive Environments**



1/3 Octave Polar Response Plots



Front Transducer Response prior to signal processing

**Acoustic Technologies**  
8-10 Staple Street  
Seventeen Mile Rocks  
Brisbane, Qld 4073  
Australia

Phone (07) 3376-4122  
Fax (07) 3376-5793

**International**

Phone 617 3376-4122  
Fax 617 3376-5793

**Email & Internet**

info@atprofessional.com.au  
www.atprofessional.com.au