



BLACKBIRD CLA SYSTEM

CLA 600

CLA LF6000



PROFESSIONAL AUDIO PRODUCTS
MADE IN AUSTRALIA



Composite Line Array

The CLA600 Composite Line Array and the CLA LF6000 Sub Bass Enclosure combine to create the BLACKBIRD CLA Sound Reinforcement System. The BLACKBIRD CLA System is the ideal solution for compact touring or in-house systems offering highly advanced line array technology in a compact and easy to use format. A system comprising 2x CLA600 + 1x CLA LF6000 per side can easily cater for audiences in excess of 1000 people.

The CLA600 is a 2 way composite line array cabinet utilising well established line array principles to achieve exceptional frequency response, pattern control and power handling. The Bass/Mid Section features 4x 8", 600 Watt Program Neodymium Loudspeakers. The critical High Frequencies are reproduced by a dual element ISOPHASIC HF Aperture capable of handling 560 Watts Program. The CLA600's dispersion pattern is 150° Horizontal by 20° Vertical providing maximum audience coverage with unparalleled intelligibility. When 2x CLA600's are stacked the vertical dispersion is reduced to 10°. Frequency response is flat 50Hz to 20kHz.

The dual 18" transducer CLA LF6000 Sub Bass System is tailored to perfectly compliment the CLA600. Power handling is 6,000 Watts Program with a frequency response from 32Hz to 200Hz. BLACKBIRD CLA Systems can use 2x CLA LF6000 Sub Bass Cabinets per 2x CLA600 to provide additional low end reinforcement. Acoustic Technologies Factory Recommended Settings guarantee optimal system performance, power handling and reliability.

The cabinets are finished in black AcoustiCoate polymer with powder coated grilles.

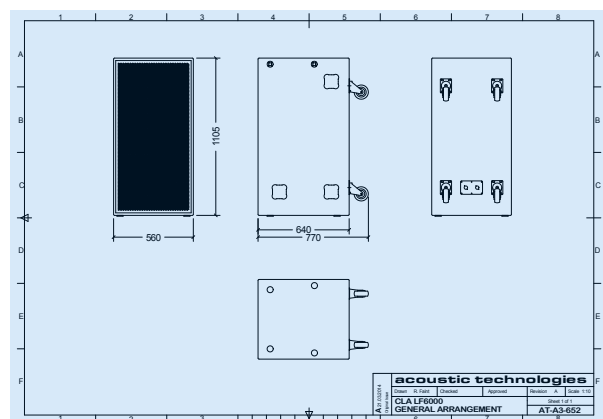
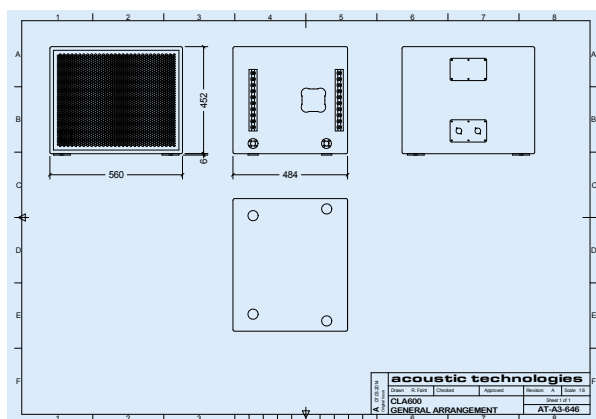
Acoustic Technologies is offering turn-key BLACKBIRD CLA 600 and CLA LF6000 Systems complete with BLACKBIRD 5k Amplifiers and BSP 2.6 Processors complete with racks and cabling to suit.

The BLACKBIRD CLA is a modular system allowing various cabinet and amplifier configurations to suit a wide range of sound reinforcement applications.

Please contact Acoustic Technologies for the range of BLACKBIRD CLA System details and pricing.



Touring and Installation





BLACKBIRD CLA SYSTEM

CLA600

CLA LF6000



PROFESSIONAL AUDIO PRODUCTS
MADE IN AUSTRALIA



Touring and Installation

CLA 600 Specifications

Transducer Complement	4 x 8" Bass-Mid Transducer 2 x 1.5" H.F. Transducer on ISOPHASIC Aperture
Frequency Response	50 Hz - 20 kHz \pm 3 dB
Sensitivity	102 dB @ 1 Watt, 1 metre
Maximum Input	Continuous: 1480WattsRMS Program: 2960 Watts Program Peak Program: 5920 Watts Peak Program
Maximum SPL	Continuous: 133 dB @ 1 metre Program: 136 dB @ 1 metre Peak Program: 139 dB @ 1 metre
Nominal Impedance	Bass / Mid: 4 Ohms H. F.: 4 Ohms
High Frequency Dispersion	150° (Horizontal) x 20° (Vertical)
Physical Size	Height 452mm, Width 560mm, Depth 484mm
Net Weight	41 Kgs
Connectors	2 x Neutrik NL4MP Speakon Connectors
Hardware	2 x Handgrips Cabinet Flying Hardware Cabinet Locating and Safety Attach Points for safe cabinet ground stacking
Cabinet Finish	AcoustiCoate Black Elastomer Finish
Grille Finish	Black Powder Coat Paint Finish

CLA LF6000 Specifications

Transducer Complement	2 x 18" Sub Bass Transducers
Frequency Response	32 Hz - 200 Hz \pm 3 dB
Sensitivity	98 dB @ 1 Watt, 1 metre
Maximum Input	Continuous: 3000 Watts RMS Program: 6000 Watts Program Peak Program: 12000 Watts Peak Program
Maximum SPL	Continuous: 133 dB @ 1 metre Program: 136 dB @ 1 metre Peak Program: 139 dB @ 1 metre
Nominal Impedance	2 x 4 Ohms
Physical Size	Height 1105mm, Width 560mm, Depth 640mm (excluding castors) - 770mm (including castors)
Net Weight	75.3 Kgs
Connectors	2 x Neutrik NL4MP Speakon Connectors
Hardware	6 x Handgrips 4x Castors Cabinet Locating and Safety Attach Points for safe cabinet ground stacking
Cabinet Finish	AcoustiCoate Black Elastomer Finish
Grille Finish	Black Powder Coat Paint Finish

Suggested Applications

- ▣ Live Music Presentations
- ▣ Dance Clubs
- ▣ Outdoor Sporting Events
- ▣ Houses of Worship
- ▣ Corporate Presentations
- ▣ Concert Sound
- ▣ Festivals
- ▣ Public Events

Sensitivity, Maximum Power and SPL measurements are conducted in accordance with the AES 24 Hour Pink Noise Standard.

Acoustic Technologies reserve the right to alter or amend CLA600 and the CLA LF6000, without prior warning in the interests of product improvement.



Acoustic Technologies

8-10 Staple Street, Seventeen Mile Rocks
Queensland 4073, Australia
Phone (617) 3376-4122 | Fax (617) 3376-5793
Web www.atprofessional.com.au
Email info@atprofessional.com.au

- ▣ For further information, general arrangement and downloads please visit:

www.atprofessional.com.au