

SFM09A

Professional Self Powered Low Profile Stage Floor Monitor



Monitor Series

Key Features

Acoustic Technologies SFM09A is a self powered stage floor monitor system engineered to provide exceptional performance from an extremely compact, low profile, light weight cabinet.

- ▶ 1175 Watt Class D Amplifier
- ▶ Flat Accurate Reproduction
- ▶ Ultra Compact and Low profile
- ▶ 5 Year Warranty

The SFM09A utilizes two 8" Bass-Mid cone transducers one of which incorporates a 1" coaxial high frequency transducer. An optimized passive crossover network provides a seamless, phase coherent transition between the system components. The symmetrical baffle layout allows the SFM09A to be manufactured in mirror imaged pairs.

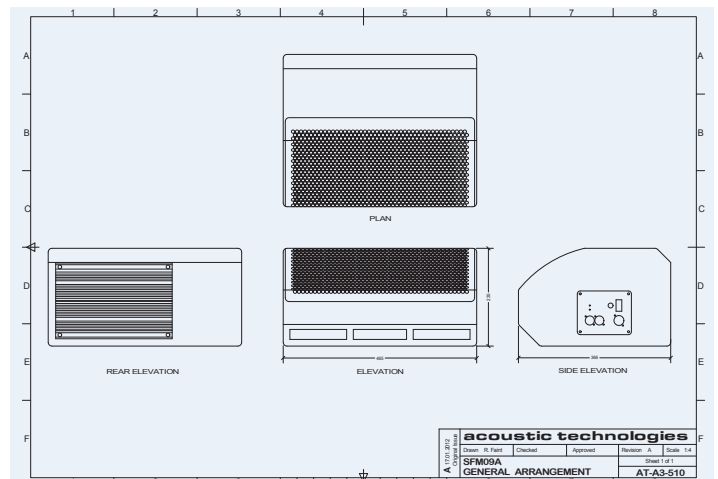
Overview

- ▶ Dimensions: 465mm (W) x 235mm (H) x 366mm (D)
- ▶ Weight: 21.5 Kgs
- ▶ Finish: AcoustiCoate Black Elastomer
- ▶ Transducers: 1 x 8" Bass/Mid Transducer
1 x 8" + 1" Coaxial Transducer

The SFM09A is powered by a highly efficient 1175 Watt Class D Power Amplifier Module which features an integrated Switch Mode Power Supply. The amplifier module provides Soft Limit and Thermal Overload protection, balanced XLR audio connectors and a Powercon® mains inlet.

The cabinet is constructed from premium grade Birch Ply finished in black AcoustiCoate with a powder coated perforated steel grille to protect the system components. A carry handle is provided.

The SFM09A is the ideal stage floor monitor for all applications requiring a compact, low profile self-powered loudspeaker system such as audio/video presentations, houses of worship and television staging as well as live music and theatre productions.



SFM09A

Professional Self Powered Low Profile Stage Floor Monitor



Specifications

Acoustic Performance

Frequency Response	70 Hz - 20 kHz \pm 3 dB
Sensitivity	97dB @ 1 Watt, 1 Metre
Maximum SPL (Calculated)	128dB @ 1 Metre
High Frequency Dispersion	Horizontal 100 ° (H) x 100 ° (V)

System Components

Transducer Complement	1 x 8" Bass-Mid Transducer + 1" Coaxial Transducer 1 x 8" Bass-Mid Transducer
Crossover Network	Optimised Passive Network @2.9kHz

Amplifier Specifications

Input Impedance	8k Ohms
Amplifier Module Output Power	1175 Watts
Amplifier Module Type	Class D Amplifier Switch Mode Power Supply
Amplifier Protection	Thermal Over Current HF on Input Signal Output Limit
Indicator LEDs	Mains On Output Limit
Connectors & Switches	Female XLR - Signal Input Male XLR - Signal Link Powercon AC Mains Inlet Mains Switch Mains Circuit Breaker

Enclosure Specifications

Physical Size	465mm (W) x 235mm (H) x 366mm (D)
Weight	21.5 Kgs
Enclosure Finish	AcoustiCoate Black Elastomer
Grille Finish	Black Powder Coat

Sensitivity, Maximum Power and SPL measurements are conducted in accordance with the AES 24 Hour Pink Noise Standard.

Acoustic Technologies reserve the right to alter or amend the SFM09A, without prior warning in the interests of product improvement.

- For further information, please visit the Acoustic Technologies website at www.atprofessional.com.au

Suggested Applications

- Live Music
Vocal & Instrumental Monitors
- Rehearsal Room Monitors
- Corporate Production
- Houses of Worship
Monitor Systems
- Musical Theatre &
Sound Stage
Monitors
- Television & Radio
Cue, Review,
Playback Monitors
- DJ Booth Monitors
- Karaoke System
Vocal Monitors
- Fashion Runway Monitors

The SFM09A enclosure is proudly manufactured in Australia, constructed of high quality 12mm and 18mm Birch Ply.

The transducers are protected by a perforated steel mesh, lined with acoustically transparent foam, providing a durable visually appealing finish.

The SFM09A passive crossover provides a seamless transition between the transducers.

The crossover frequency is selected to enhance the already superb performance of the individual components. Great care is taken to ensure that a phase coherent output is maintained across the entire audio bandwidth.



Acoustic Technologies

8-10 Staple Street, Seventeen Mile Rocks
Queensland 4073, Australia
Phone (617) 3376-4122 | Fax (617) 3376-5793
Web www.atprofessional.com.au
Email info@atprofessional.com.au