



# BLACKBIRD CLA SYSTEM

## CLA 700

## CLA LF3200



### Composite Line Array

The CLA700 Composite Line Array and the CLA LF3200 Sub Bass Enclosure combine to create the BLACKBIRD CLA Sound Reinforcement System. The BLACKBIRD CLA System is the ideal solution for compact touring or in-house systems offering highly advanced line array technology in a compact and easy to use format. A system comprising 2x CLA700 + 2x CLA LF3200 per side can easily cater for audiences in excess of 1000 people.

The CLA700 is a 2 way composite line array cabinet utilising well established line array principles to achieve exceptional frequency response, pattern control and power handling. The Bass/Mid Section features 4x 8", 700 Watt Program Neodymium Loudspeakers. The critical High Frequencies are reproduced by a dual element ISOPHASIC HF Aperture capable of handling 560 Watts Program. The CLA700's dispersion pattern is 150° Horizontal by 20° Vertical providing maximum audience coverage with unparalleled intelligibility. When 2x CLA700's are stacked the vertical dispersion is reduced to 10°. Frequency response is flat from 50Hz to 20kHz.

The 18" transducer CLA LF3200 Sub Bass System is tailored to perfectly compliment the CLA700. Power handling is 3,200 watts per cabinet with a frequency response from 32Hz to 200Hz. BLACKBIRD CLA Systems can use 4x CLA LF3200 Sub Bass Cabinets per 2x CLA700 to provide additional low end reinforcement. Acoustic Technologies Factory Recommended Settings guarantee optimal system performance, power handling and reliability.

The cabinets are finished in black AcoustiCoate polymer with powder coated grilles.

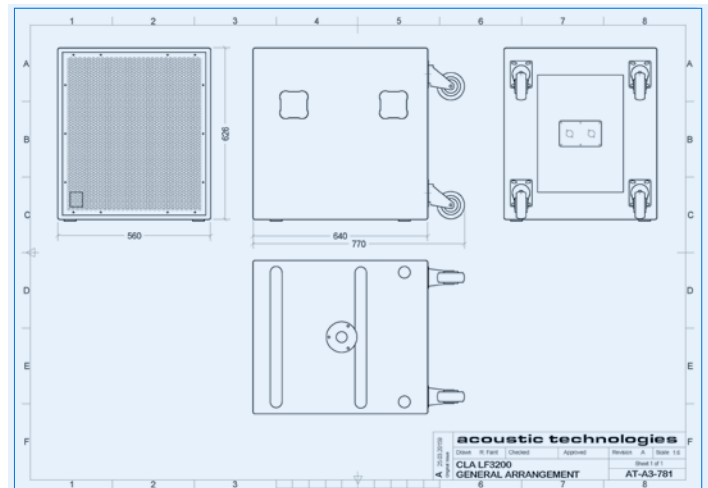
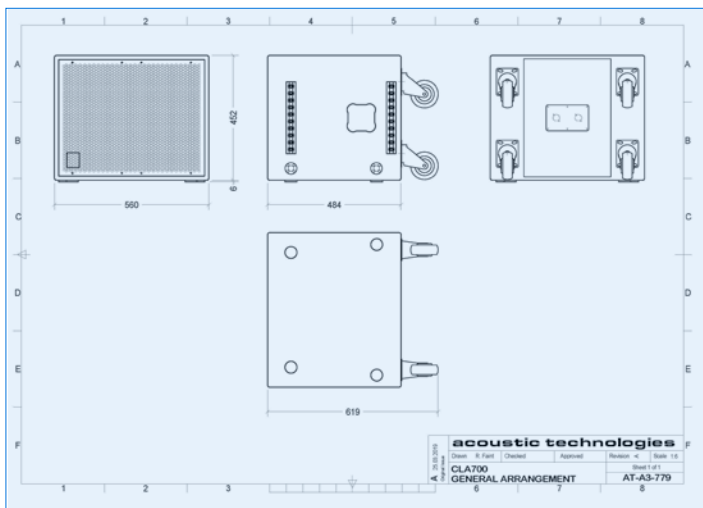
Acoustic Technologies is offering turn-key BLACKBIRD CLA 700 and CLA LF3200 Systems complete with PowerSoft XSeries Amplifiers complete with racks and cabling to suit.

The BLACKBIRD CLA is a modular system allowing various cabinet and amplifier configurations to suit a wide range of sound reinforcement applications.

Please contact Acoustic Technologies for the range of BLACKBIRD CLA System details and pricing.



Touring and Installation





# BLACKBIRD CLA SYSTEM

## CLA700

## CLA LF3200



PROFESSIONAL AUDIO PRODUCTS  
MADE IN AUSTRALIA



Touring and Installation

### CLA 700 Specifications

Transducer Complement	4 x 8" Bass-Mid Transducer 2 x 1.5" H.F. Transducer on ISOPHASIC Aperture
Frequency Response	50 Hz - 20 kHz $\pm$ 3 dB
Sensitivity	102 dB @ 1 Watt, 1 metre
Maximum Input	Continuous: 1480 Watts RMS Program: 2960 Watts Program Peak: 5920 Watts Peak
Maximum SPL	Continuous: 133 dB @ 1 metre Program: 136 dB @ 1 metre Peak Program: 139 dB @ 1 metre
Nominal Impedance	Bass / Mid: 8 Ohms H. F.: 16 Ohms
High Frequency Dispersion	150° (Horizontal ) x 20° (Vertical)
Physical Size	Height 452mm, Width 560mm, Depth 484mm (excluding castors)- 614mm (including castors)
Net Weight	37 Kgs (excluding castors) 40 Kgs (including castors)
Connectors	2 x Neutrik NL4MP Speakon Connectors
Hardware	2 x Handgrips 4 x Castors Cabinet Flying Hardware Cabinet Locating and Safety Attach Points for safe cabinet ground stacking
Cabinet Finish	AcoustiCoate Black Elastomer Finish
Grille Finish	Black Powder Coat Paint Finish

### CLA LF3200 Specifications

Transducer Complement	1 x 18" Sub Bass Transducer
Frequency Response	32 Hz - 200 Hz $\pm$ 3 dB
Sensitivity	98 dB @ 1 Watt, 1 metre
Maximum Input	Continuous: 1600 Watts RMS Program: 3200 Watts Program Peak: 6400 Watts Peak
Maximum SPL	Continuous: 130 dB @ 1 metre Program: 133 dB @ 1 metre Peak Program: 136r dB @ 1 metre
Nominal Impedance	1 x 4 Ohms
Physical Size	Height 626mm, Width 560mm, Depth 640mm (excluding castors) - 770mm (including castors)
Net Weight	53 Kgs (excluding castors) 56 Kgs (including castors)
Connectors	2 x Neutrik NL4MP Speakon Connectors
Hardware	4 x Handgrips 4x Castors Cabinet Locating and Safety Attach Points for safe cabinet ground stacking
Cabinet Finish	AcoustiCoate Black Elastomer Finish
Grille Finish	Black Powder Coat Paint Finish

### Suggested Applications

- ▣ Live Music Presentations
- ▣ Dance Clubs
- ▣ Outdoor Sporting Events
- ▣ Houses of Worship
- ▣ Corporate Presentations
- ▣ Concert Sound
- ▣ Festivals
- ▣ Public Events

Sensitivity, Maximum Power and SPL measurements are conducted in accordance with the AES 24 Hour Pink Noise Standard.

Acoustic Technologies reserve the right to alter or amend CLA700 and the CLA LF3200, without prior warning in the interests of product improvement.



## Acoustic Technologies

8-10 Staple Street, Seventeen Mile Rocks  
Queensland 4073, Australia  
Phone (617) 3376-4122 | Fax (617) 3376-5793  
Web [www.atprofessional.com.au](http://www.atprofessional.com.au)  
Email [info@atprofessional.com.au](mailto:info@atprofessional.com.au)

- ▣ For further information, general arrangement and downloads please visit:  
[www.atprofessional.com.au](http://www.atprofessional.com.au)