

SFM10

LOW PROFILE STAGE FLOOR MONITOR WEDGE



The SFM10 is the result of advanced transducer technology combined with the latest computer aided design techniques. This ultra-compact low profile two way stage monitor features dual 200mm Low-Mid Frequency cone transducers, one of which features a 1" coaxial high frequency transducer.

The proprietary passive dividing network ensures a seamless transition between the LF and HF components. Despite its compact dimensions, the SFM10 delivers a "ruler flat" response from 70Hz to 20kHz with a staggering 880 Watts power handling capacity.

The enclosure is crafted from high grade Finnish Birch ply and is finished in our rugged AcoustiCoate black elastomer finish. The side mounted input panels feature parallel inputs terminating in industry standard Neutrik Speakon connectors. The symmetrical layout allows the user to easily rearrange the transducers to create mirror imaged pairs if required. The transducers are protected by a perforated steel mesh grille, lined with acoustically transparent foam.

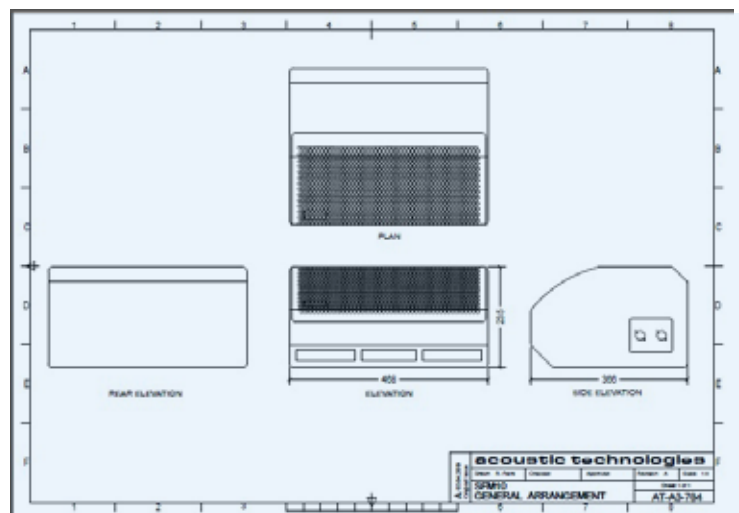
The SFM10 is ideal for any applications requiring monitors to be heard, but not seen, such as corporate AV and Television productions. It is also the perfect choice when space is at a premium.

Key Features

- High Efficiency Class D Amplifier Module
- Flat Accurate Reproduction
- Ultra Compact and Low Profile
- 5 Year Warranty

Overview

- Dimensions: 468mm(W) x 235mm(H) x 365mm(D)
- Weight: 16.5Kgs
- Finish: Black AcoustiCoate
- Transducers: 1x 8" Bass-Mid Transducer + 1" Coaxial HF Transducer + 1x 8" Bass-Mid Transducer



SFM10

LOW PROFILE STAGE FLOOR MONITOR WEDGE



Specifications

Acoustic Performance

Frequency Response	70 Hz - 20 kHz \pm 3 dB
Sensitivity	94 dB @ 1 watt, 1 metre
High Frequency Dispersion	Horizontal 100 ° Vertical 100 °

Enclosure Specifications

Physical Size	235mm (H) x 365mm (D) x 468mm (W)
Weight	16.5 Kgs
Enclosure Finish	AcoustiCoate Black Elastomer
Grille Finish	Black Powder Coat Paint Finish
Connectors	4 x Speakon® Connectors

Transducer

Transducer Complement	1x 8" Bass-Mid Transducer + 1" Coaxial HF Transducer 1x 8" Bass-Mid Transducer
Nominal Impedance	4 Ohms

Input

Maximum Input	Continuous 440 Watts RMS Program 880 Watts Program
Maximum SPL (Calculated)	Continuous 120 dB @ 1 metre Program 123 dB @ 1 metre

Suggested Applications

- Live Music
Vocal & Instrumental
Monitors
- Rehearsal Room Monitors
- Corporate Production
- Houses of Worship
Monitor Systems
- Musical Theatre &
Sound Stage
Monitors
- Television & Radio
Cue, Review,
Playback Monitors
- DJ Booth Monitors
- Fashion Runway Monitors

The SFM10 enclosure is constructed of high quality 12mm Finnish Birch Ply. The transducers are protected by a perforated steel mesh, lined with acoustically transparent foam, providing a durable visually appealing finish.

The SFM10 passive crossover provides a seamless transition between the transducers. The crossover frequency is selected to enhance the already superb performance of the individual components. Great care is taken to ensure that a phase coherent output is maintained across the entire audio bandwidth.

Sensitivity, Maximum Power and SPL measurements are conducted in accordance with the AES 24 Hour Pink Noise Standard.

Acoustic Technologies reserve the right to alter or amend the SFM10, without prior warning in the interests of product improvement.



Acoustic Technologies

8-10 Staple Street, Seventeen Mile Rocks
Queensland 4073, Australia
Phone (617) 3376-4122 | Fax (617) 3376-5793
Web www.atprofessional.com.au
Email info@atprofessional.com.au

- For further information and downloads please visit
www.atprofessional.com.au