

SS18

FULL RANGE INSTALLATION CABINET

at
PROFESSIONAL AUDIO SYSTEMS

MANUFACTURED IN AUSTRALIA



INSTALLATION

Acoustic Technologies SS18 is a compact, full range trapezoidal loudspeaker system optimised for all professional audio installation applications. The SS18 is available with a fully weather-proofed option for outdoor applications.

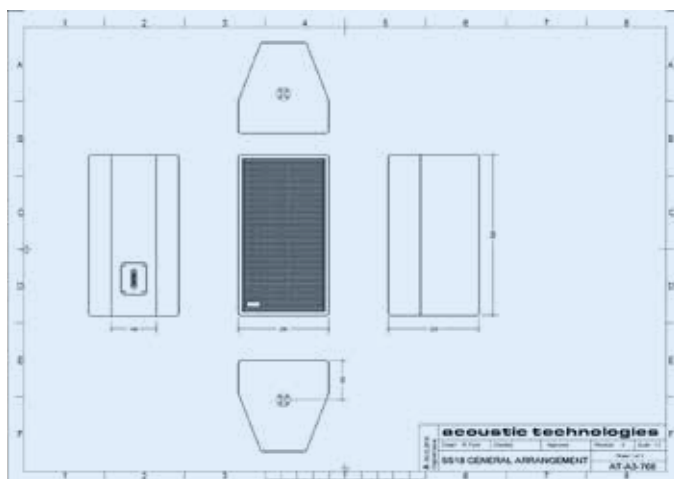
The SS18 is loaded with an 8" neodymium bass-mid transducer and a 1" H.F. Compression Driver. The SS18 is available with a choice of HF dispersion patterns - a large format flare providing 90° (V) x 60° (H) or an ISOPHASIC flare providing 140° (V) x 20° (H) coverage. The horn flare can be rotated through 90° allowing the cabinet to be mounted for either vertical or horizontal applications and still maintain the required H.F. dispersion characteristics.

New generation passive crossovers allow the high frequency coverage pattern to match the low frequency driver's dispersion characteristics. The SS18 is fitted with screw terminal barrier strip as standard with other connector options available on request.

Acoustic Technologies' SS18 is ideally suited to a wide range of professional audio applications as a stand-alone compact full range cabinet or as a compact full-range system when combined with a sub bass cabinet.

Overview

- Dimensions: Height 500mm, Depth 283mm, Width Front 280mm, Rear 140mm
- Weight: 14 Kg
- Finish: Textured Black Paint Finish
A wide range of decor matched and custom finishes available upon request.
- Transducers: 1 x 8" x Bass-Mid Transducer
1 x 1" HF Compression Driver



Key Features

- 740W Program power handling
- 8-inch Bass-mid driver, 1-inch compression driver
- 90° x 60° or 140° x 20° rotatable horn flare
- Finnish birch construction
- Custom colour options
- 90 Hz - 22 kHz ± 10 dB frequency response

SS18

FULL RANGE INSTALLATION CABINET

Specifications

Transducer Complement	1 x 8" x Bass-Mid Transducer 1 x 1" HF Compression Driver
Frequency Response	90 Hz - 22 kHz ± 10 dB
Nominal Impedance	8 Ohms
Sensitivity	97 dB @ 1 watt, 1 metre
Maximum Input Continuous	370 Watts RMS
Maximum Input Program	740 Watts Program
Maximum SPL Continuous	123 dB @ 1 metre
Maximum SPL Program	126 dB @ 1 metre
High Frequency Dispersion	90° Horizontal x 60° Vertical (standard HF Flare) or 140° Horizontal x 20° Vertical (Isophasic HF Flare) H.F. Flare is rotatable through 90°
Dimensions	Height 500mm, Depth 283mm, Width Front 280mm, Rear 140mm
Net Weight	14 Kg
Connector Options	Screw Terminal Barrier Strip Contact factory for alternative connector options
Mounting Options	"C" Bracket Supplied Contact factory for alternative mounting options
Cabinet Finish Options	Textured black paint finish A wide range of decor matched and custom finishes are available upon request.
Grille Finish Options	Black Powder Coat paint finish with weather resistant treatment

Suggested Applications

- Audio - Visual Presentations & Installations
- Theme Parks
- Sporting Events
- Product Promotions
- Church Vocal & Music Reinforcement
- Corporate Productions
- Education & Training Facilities
- Tradeshow & Exhibitions
- Theater In-fill

The SS18 enclosure is constructed of high quality 12mm and 18mm Finnish Birch Ply.

The transducers are protected by a perforated steel mesh, lined with acoustically transparent material, providing a durable visually appealing finish.

Great care is taken to ensure that a phase coherent output is maintained across the entire audio bandwidth.

Sensitivity, Maximum Power and SPL measurements are conducted in accordance with the AES 24 Hour Pink Noise Standard.

- For further information, please visit the Acoustic Technologies website at www.atprofessional.com.au



Acoustic Technologies

8-10 Staple Street, Seventeen Mile Rocks
Queensland 4073, Australia
Phone (617) 3376-4122
Web www.atprofessional.com.au
Email info@atprofessional.com.au