

# SCX25

FULLRANGE LOUDSPEAKER / STAGE FLOOR MONITOR



*The highly versatile SCX25, Fullrange Loudspeaker System or Stage Floor Monitor.*

Touring and Installation

Acoustic Technologies SCX25 is a full range loudspeaker system providing exceptional performance for a broad range of professional sound reinforcement applications. The highly versatile SCX25 is eminently suited to both front of house and stage floor monitor applications.

The SCX25 is a ported enclosure utilising a premium quality Neodymium coaxial 12" transducer and a 1.3" HF driver coupled to a 60° x 40° modified exponential horn flare for improved acoustic loading and controlled coverage. The SCX25 allows either passive or active operation to be selected by a recessed switch. The optimised passive crossover network provides a seamless, phase coherent transition between the system components.

The cabinet is constructed from premium grade Birch ply finished in black AcoustiCoate. A perforated steel mesh grille protects the system components. The SCX25 offers remarkable versatility for all applications. The cabinet's hardware includes rigging track on the top and rear panels for safe suspension and an industry standard dual angle polemount adaptor. Dual Speakon connection panels are provided on the cabinet's top and bottom which become the cabinet ends when used as a stage monitor, allowing neat and simple cabinet cabling. Recessed handgrips are provided for easy handling.

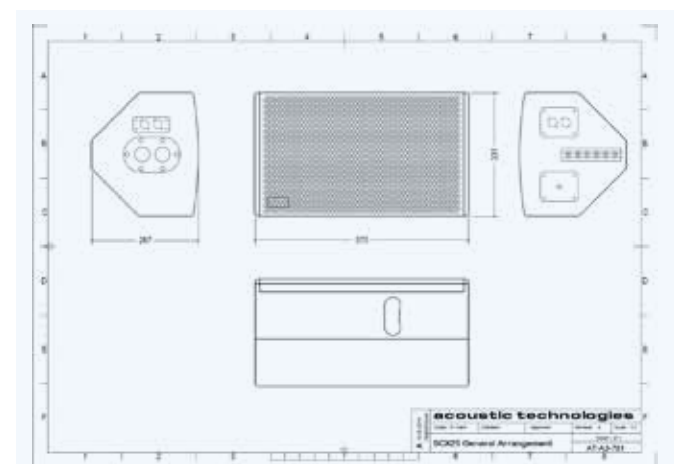
The versatility of the SCX25 ensures its place in any professional audio hire shop inventory because it is ideally suited to any installed or portable application requiring a full range loudspeaker or stage floor monitoring system such as corporate audio/video presentations, live music production, worship production and theatre performances.

## Key Features

- Versatile Fullrange Loudspeaker System or Stage Floor Monitor
- 860 Watts Program
- 3 Year Warranty

## Overview

- Dimensions: 575mm (W) x 331mm (H) x 287mm (D)
- Weight: 16 Kgs
- Finish: AcoustiCoate Black Elastomer Finish
- Transducer: 1x 12" LF + 1.3" HF Coaxial Transducer



# SCX25

FULLRANGE LOUDSPEAKER / STAGE FLOOR MONITOR



PROFESSIONAL AUDIO SYSTEMS

MANUFACTURED IN AUSTRALIA



## Specifications

### Acoustic Performance

Frequency Response	100Hz - 18KHz $\pm$ 3dB
Sensitivity	99dB @ 1 Watt, 1 metre
Max Input Continuous	430 Watts RMS
Max Input Program	860 Watts Program
Maximum SPL Continuous (Calculated)	125dB @ 1 metre
Max SPL Program (Calculated)	128dB @ 1 metre
High Frequency Dispersion	Horizontal 60° (H) x 40° (V)

### Transducers & Components

Transducer Complement	1x 12" LF + 1.3" HF Coaxial TransducerCrossover
Normal Impedance	8 Ohms
Crossover Frequency	Passive Operation: 1.5 kHz Active Operation: 1.2 kHz to 1.5 kHz @ 24dB/Octave

### Enclosure Specifications

Physical Size	575mm (H) x 331mm (W) x 287mm (D)
Weight	16 Kgs
Enclosure Finish	AcoustiCoate Black Elastomer Finish
Grille Finish	Black Powder Coat Finish
Hardware	2x Handgrip Rigging Track Top and Rear Dual Angle Pole Mount Adaptor: 0° / 10° downward tilt



Sensitivity, Maximum Power and SPL measurements are conducted in accordance with the AES 24 Hour Pink Noise Standard.

Acoustic Technologies reserve the right to alter or amend the SCX25 without prior warning in the interests of product improvement.

For further information and downloads please visit

[www.atprofessional.com.au](http://www.atprofessional.com.au)

## Suggested Applications

- Live Music Production
- Rehearsal Room Monitors
- Corporate Production
- Houses of Worship
- Musical Theatre & Sound Stages
- Television & Radio Cue, Review and Playback Monitors
- DJ Booth Monitors

For many years we have had requests to build a dual purpose speaker- one that could be used as either a foldback monitor or a compact full range Front of House speaker.

The enclosure is custom tuned to accommodate a new 12" coaxial transducer to ensure great sound regardless of application. The enclosure is fitted with a dual angle pole-mount - straight and 10° tilt - as well as rigging track allowing safe and easy suspension when required.

The SCX25 enclosure is constructed of high quality void free 12mm & 18mm Finnish Birch Ply.

The transducers are protected by a perforated steel mesh, lined with acoustically transparent foam, providing a durable visually appealing finish.



## Acoustic Technologies

8-10 Staple Street, Seventeen Mile Rocks  
Queensland 4073, Australia  
Phone (617) 3376-4122 | Fax (617) 3376-5793  
Web [www.atprofessional.com.au](http://www.atprofessional.com.au)  
Email [info@atprofessional.com.au](mailto:info@atprofessional.com.au)