

# SCX1500A

PROFESSIONAL FULL RANGE POINT SOURCE LOUDSPEAKER

**at**  
PROFESSIONAL AUDIO SYSTEMS  
MANUFACTURED IN AUSTRALIA



Touring and Installation

Acoustic Technologies SCX1500A is a full range point source loudspeaker system providing exceptional performance for a broad range of professional sound reinforcement applications. The highly versatile SCX1500A is eminently suited to both Front Of House and Stage Systems.

The SCX1500A is a ported enclosure utilising a premium quality coaxial 15" transducer providing a uniform 60°X 40° nominal coverage pattern. The cabinet is constructed from premium grade Birch ply finished in black AcoustiCoate. A perforated steel mesh grille protects the system components.

The SCX1500A offers remarkable versatility for all applications. The cabinet's hardware includes industry standard rigging points.

Recessed hand grips are provided for easy handling.

The versatility of the SCX1500A ensures its place in any professional audio production company inventory because it is ideally suited to any installed or portable application requiring a full point source speaker system such as corporate audio/video presentations, live music production, worship production and theatre performances.

## Key Features

- ▣ Versatile Full Range Self Powered Loudspeaker System
- ▣ Self Powered Operation
- ▣ Cabinet is same dimensions as the CLA700A speaker system which allows it to be seamlessly integrated with the CLALF3200A Systems.
- ▣ 3 Year Warranty

## Suggested Applications

- ▣ Live Music Production
- ▣ Rehearsal Room Monitors
- ▣ Corporate Production
- ▣ Houses of Worship
- ▣ Musical Theatre & Sound Stages
- ▣ Television & Radio Cue, Review and Playback Monitors
- ▣ DJ Booth Monitors



# SCX1500A

PROFESSIONAL FULL RANGE POINT SOURCE LOUDSPEAKER



PROFESSIONAL AUDIO SYSTEMS

MANUFACTURED IN AUSTRALIA



## Specifications

### Acoustic Performance

Frequency Response	40Hz -18kHz +- 3dB
Sensitivity	99dB @ 1Watt, 1 metre
Max SPL Continuous (Calculated)	126dB @ 1 metre
Max SPL Program (Calculated)	129dB @ 1 metre
High Frequency Dispersion	Horizontal 60° Vertical 40°

### Transducers & Components

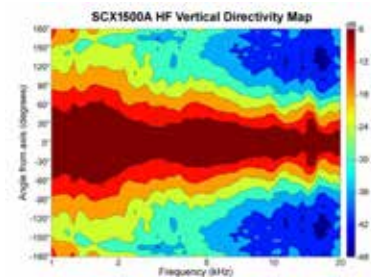
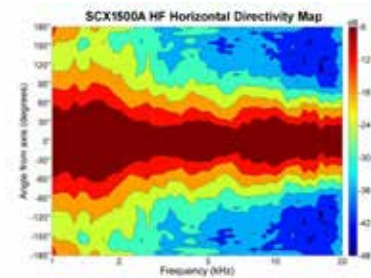
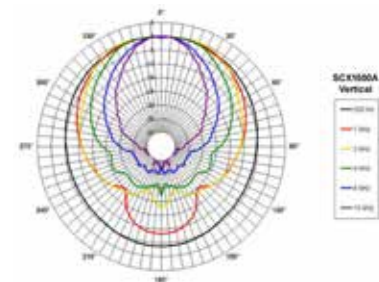
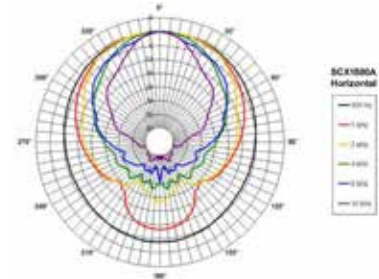
Transducer Complement	1x 15" Coaxial Transducer
Nominal Impedance	LF 8 Ohm HF 16 Ohm
Modified Exponential horn flare for improved acoustic loading and controlled coverage	

### Amplification and DSP

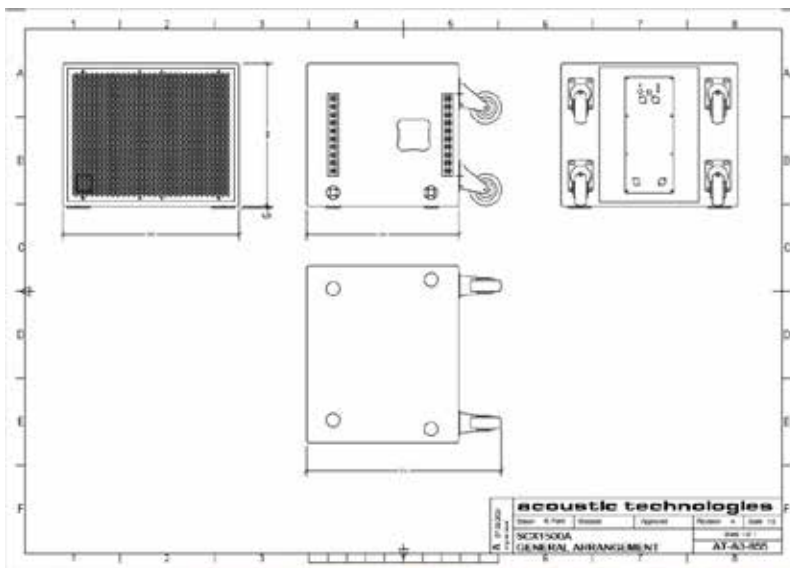
- 1 x PowerSoft DSP Amplification Platform delivering 2000W into LF and 750W into HF
- 4 x PowerSoft DSP pre-set settings

### Enclosure Specifications

Physical Size	Height 452mm, Width 560mm Depth 484mm (excluding castors), 614mm (including castors)
Weight	28Kg w/o castors, 32Kg with castors
Enclosure Finish	AcoustiCoate Black Elastomer Finish
Grille Finish	Black Powder Coat Finish
Hardware	2x Hand Grip Other Hardware Options including Rigging Track Top and Rear available upon request.



Touring and Installation



Sensitivity, Maximum Power and SPL measurements are conducted in accordance with the AES 24 Hour Pink Noise Standard.

Acoustic Technologies reserve the right to alter or amend the SCX1500A without prior warning in the interests of product improvement.

For further information and downloads please visit  
[www.atprofessional.com.au](http://www.atprofessional.com.au)



## Acoustic Technologies

8-10 Staple Street, Seventeen Mile Rocks  
Queensland 4073, Australia  
Phone (617) 3376-4122  
Web [www.atprofessional.com.au](http://www.atprofessional.com.au)  
Email [info@atprofessional.com.au](mailto:info@atprofessional.com.au)