

SSB500

Sub Bass Loudspeaker Enclosure

at
PROFESSIONAL AUDIO SYSTEMS

MANUFACTURED IN AUSTRALIA



INSTALLATION

Acoustic Technologies SSB500 is a sub bass reinforcement system engineered to provide superb performance from a compact, lightweight cabinet. The SSB500 compliments the SS Series Loudspeaker Systems as well as being a versatile system component. The SSB500 utilises a 10" bass transducer which gives an exceptionally smooth, warm and extended low frequency response.

The SSB500 is available in three variations.

- The SSB500M is constructed from premium grade 18mm Finnish birch ply, finished in textured black paint with a powder coated perforated steel grille to protect the system components. The SSB500M has mounting points to allow simple installation in any conceivable situation including the use of isolating brackets. The SSB500M is also suitable for use with the Acoustic Technologies' swivel mounting hardware option.

- The SSB500E is constructed of 16mm MDF and finished in textured black paint with a powder coated perforated steel grille to protect the system components. The SSB500E has two mounting points to allow a "C" bracket for mounting on ceilings.

- The SSB500W is a fully weatherproof cabinet for outdoor use.

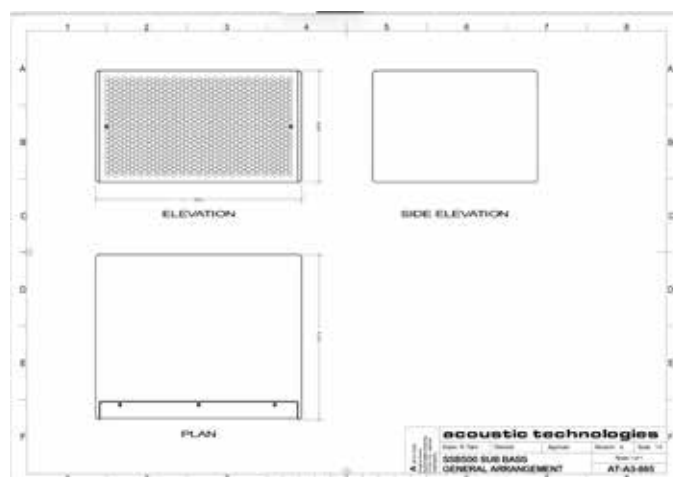
The SSB500 is the ideal sub bass system for all installations including restaurants and bars, offices and lobbies, retail environments, education classrooms and houses of worship.

Overview

- Dimensions: Height 279mm, Depth 413mm, Width 515mm
- Weight: 20Kg
- Finish: Textured Black Paint Finish
A wide range of decor matched and custom finishes available upon request.
- Transducer: 10" Bass Transducer

Key Features

- 800W Program power handling
- Finnish birch construction
- Custom colour options
- 50 Hz - 500 Hz \pm 10 dB frequency response



SSB500

Sub Bass Loudspeaker Enclosure

Specifications

Transducer Complement	1 x 10" x Bass Transducer
Frequency Response	50 Hz - 500 Hz ± 10 dB
Nominal Impedance	8 Ohms or 4 Ohms
Sensitivity	91 dB @ 1 watt, 1 metre
Maximum Input Continuous	500 Watts RMS
Maximum Input Program	800 Watts Program
Maximum SPL Continuous	118 dB @ 1 metre
Maximum SPL Program	120 dB @ 1 metre
Dimensions	Height 279mm, Depth 413mm, Width 515mm
Net Weight	20 Kg
Connector Options	Screw Terminal Barrier Strip Contact factory for alternative connector options
Mounting Options	M10 Mounting Points Contact factory for alternative mounting options
Cabinet Finish Options	Textured black paint finish A wide range of decor matched and custom finishes are available upon request.
Grille Finish Options	Black Powder Coat paint finish with weather resistant treatment Colour matched for decor cabinets.

Suggested Applications

- Restaurants and Bars
- Offices and Lobbies
- Retail Environments
- Classrooms
- Houses of Worship
- Exhibition Centres
- Boardroom Audio Systems
- Corporate Theatre

The SSB500 enclosure is constructed of high quality 18mm Finnish Birch Ply and 16mm MDF.

The transducers are protected by a perforated steel mesh, lined with acoustically transparent material, providing a durable visually appealing finish.



Shown at left without grilles with 4 hanging isolators and at right side view with 5 x M10 mounting points and 4 hanging isolators.



Sensitivity, Maximum Power and SPL measurements are conducted in accordance with the AES 24 Hour Pink Noise Standard.

- For further information, please visit the Acoustic Technologies website at www.atprofessional.com.au

Acoustic Technologies

8-10 Staple Street, Seventeen Mile Rocks
Queensland 4073, Australia
Phone (617) 3376-4122
Web www.atprofessional.com.au
Email info@atprofessional.com.au